

Biology  
PAPER 2  
Foundation Tier

Diagram Booklet

In the boxes below, write your name, centre number and candidate number.

Surname					
Other names					
Centre Number					
Candidate Number					

## INSTRUCTIONS

There may be spare copies of some diagrams in case you need them.

**THIS DIAGRAM BOOKLET MUST BE RETURNED WITH THE QUESTION PAPER AT THE END OF THE EXAMINATION.**

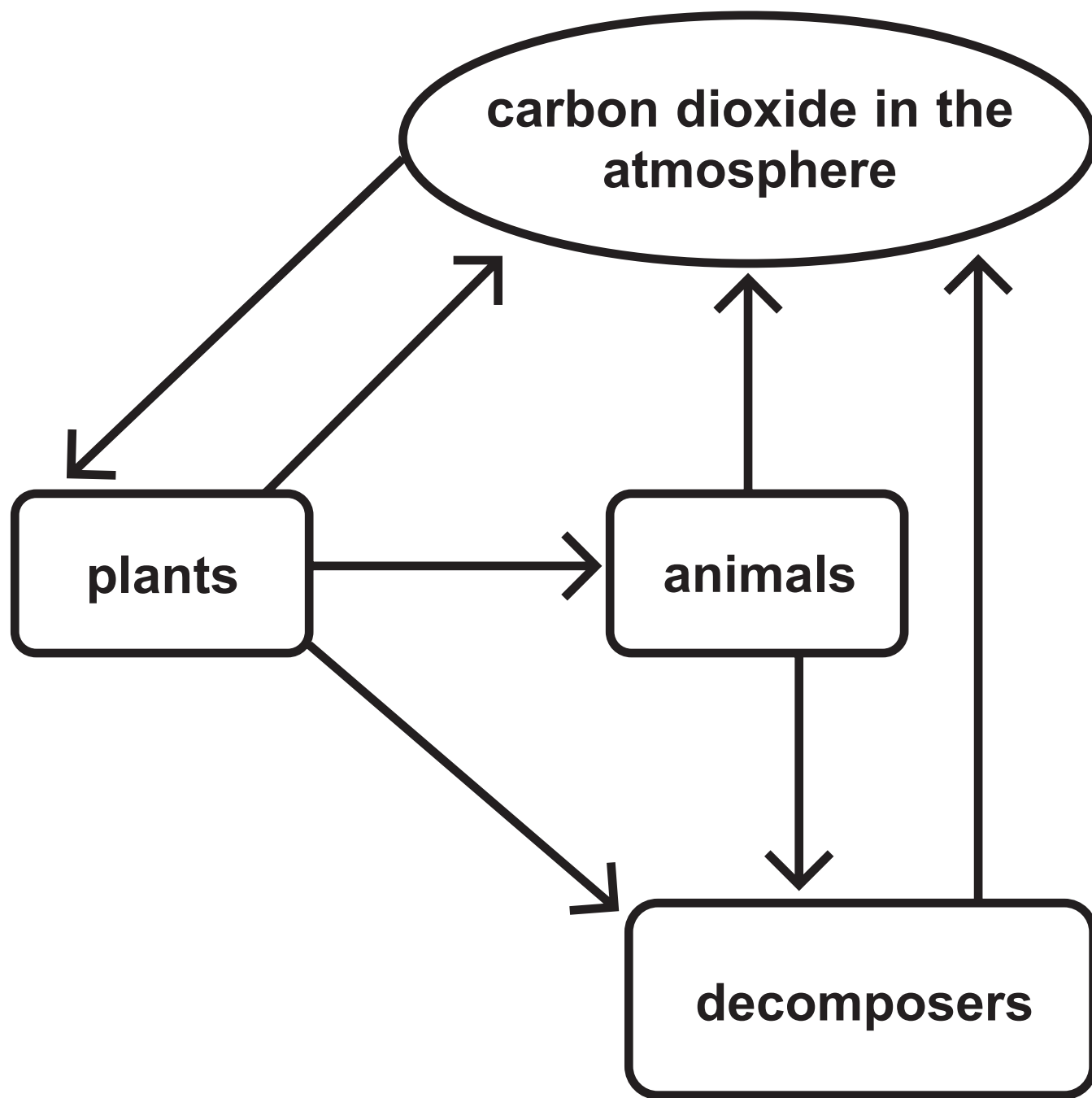
## Contents

### Page

4	Question 1(a)
5	Question 2(a)(i)
6	Question 2(a)(i) (Spare copy)
7	Question 2(a)(ii)
8	Question 3(a)
9	Question 3(b)
10	Question 4(a)
11	Question 4(b)
12	Question 4(c)
13	Question 5(a)
14	Question 6(a)
15	Question 6(a)(ii)
16	Question 7(a)
17	Question 7(b)(ii)
18	Question 8(a)
19	Question 8(b)
20	Question 8(c)
21	Question 9(a)
22	Question 9(c)
23	Question 10(a)
24	Question 10(b)
25	Question 10(c)(ii)

## Question 1(a)

FIGURE 1



## Question 2(a)(i)

part of the blood

plasma

red blood  
cell

function

● produces oestrogen

● transports dissolved urea

● contains haemoglobin

● produces antibodies

● surrounds and digests  
foreign cells

## Question 2(a)(i)

part of the blood

plasma

red blood  
cell

function

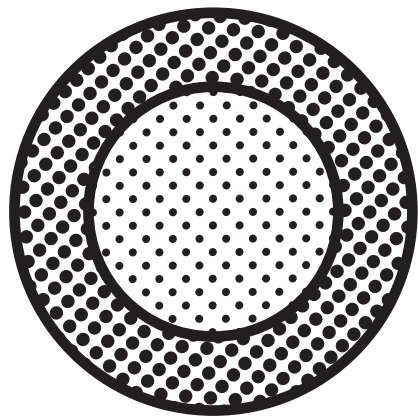
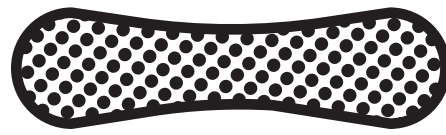
produces oestrogen

transports dissolved urea

contains haemoglobin

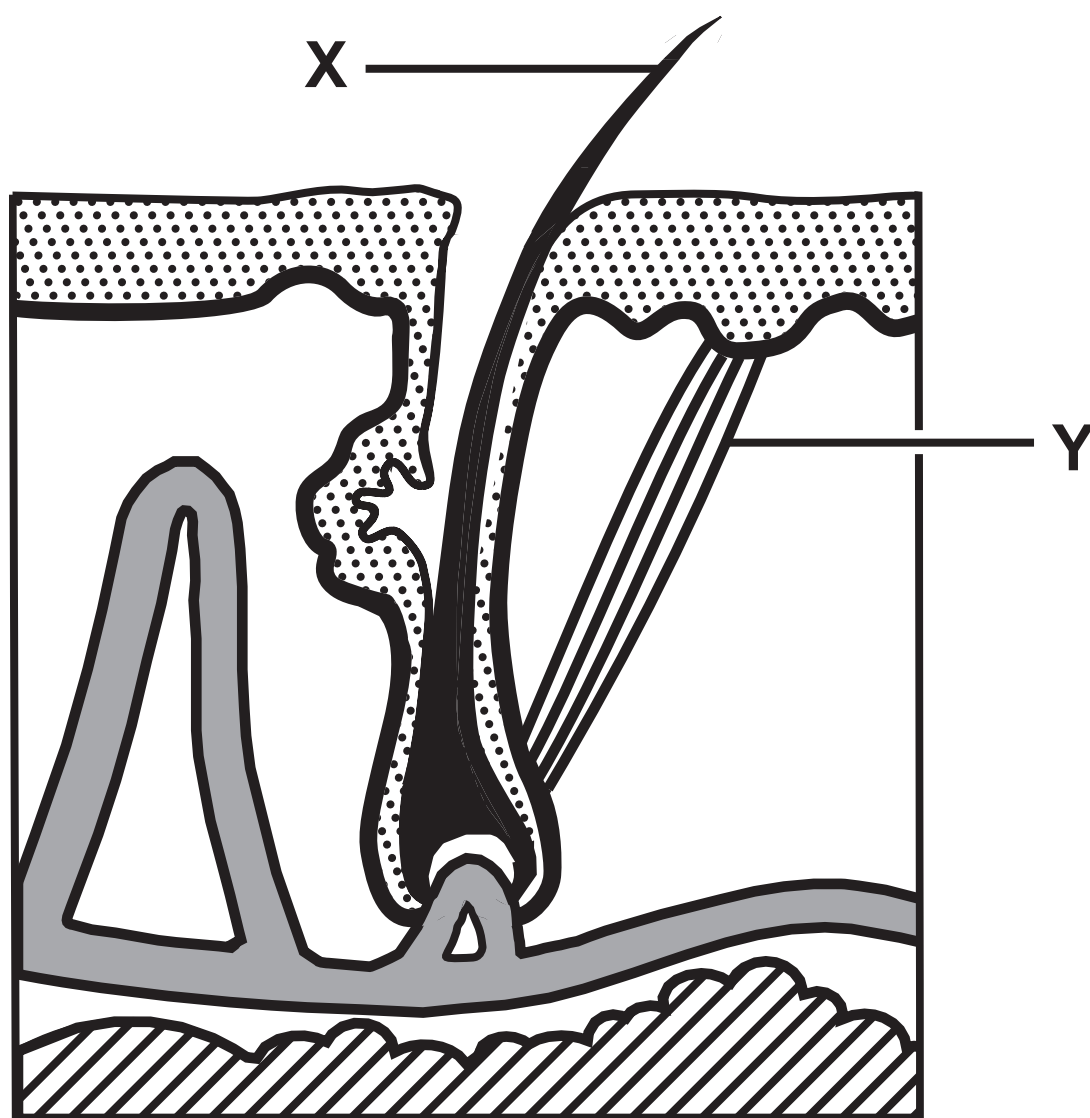
produces antibodies

surrounds and digests  
foreign cells

**Question 2(a)(ii)****FIGURE 2****plan view****side view**

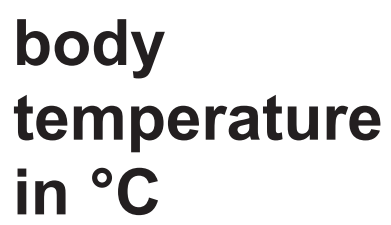
## Question 3(a)

FIGURE 3





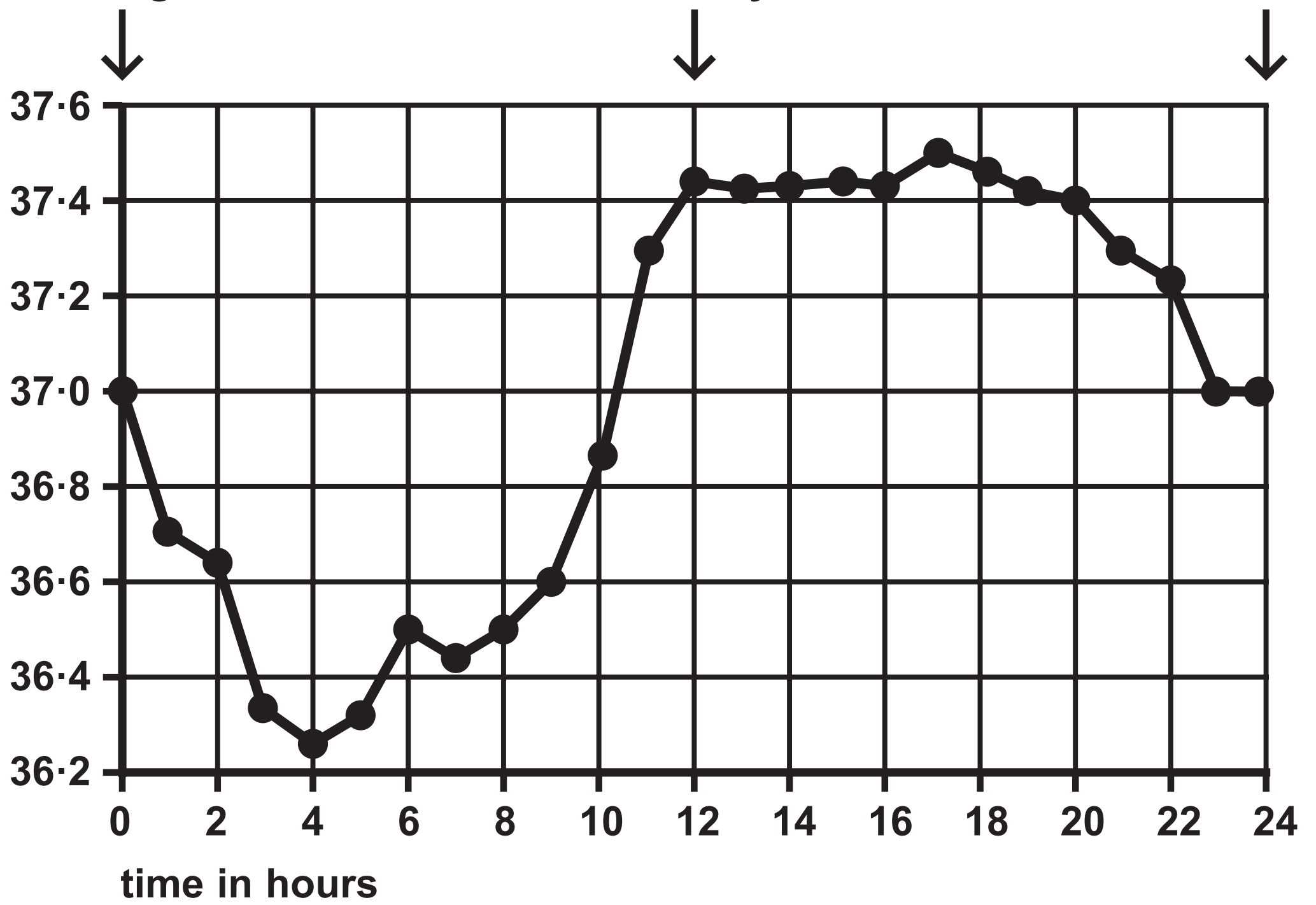
## FIGURE 4



# midnight

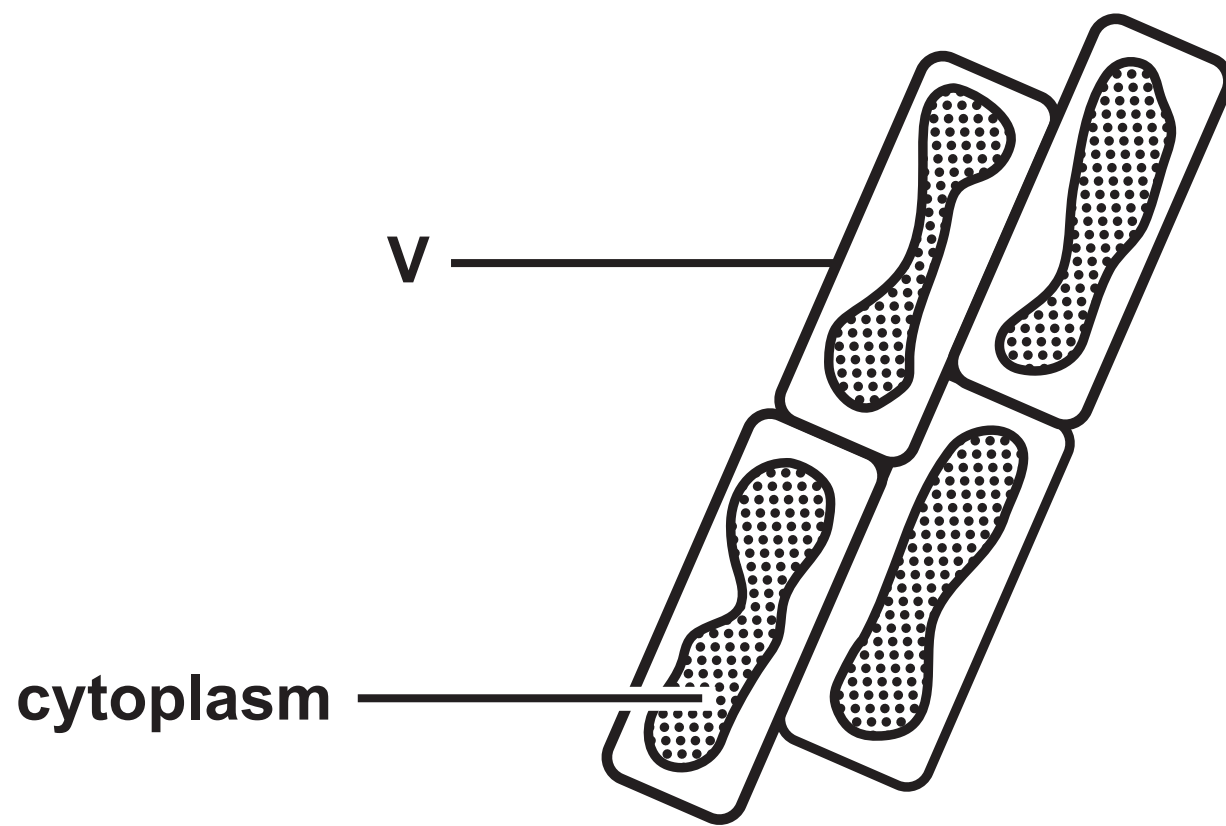
**midday**

# midnight



## Question 4(a)

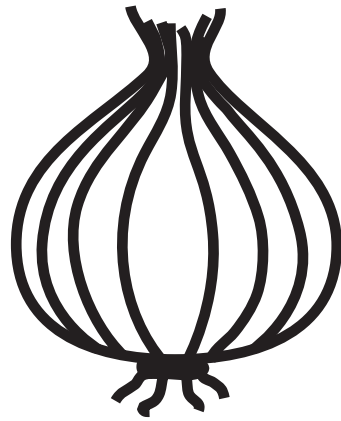
FIGURE 5



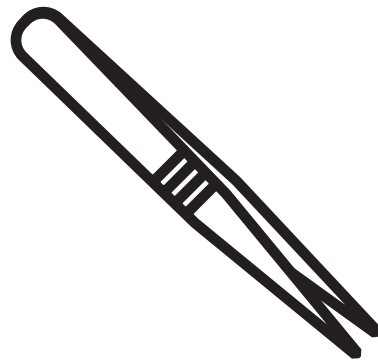
## Question 4(b)

FIGURE 6

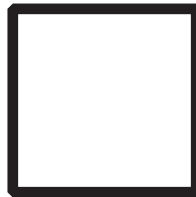
onion



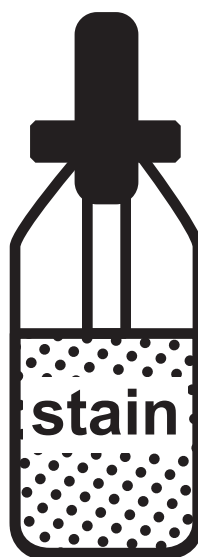
tweezers



cover slip



bottle of stain



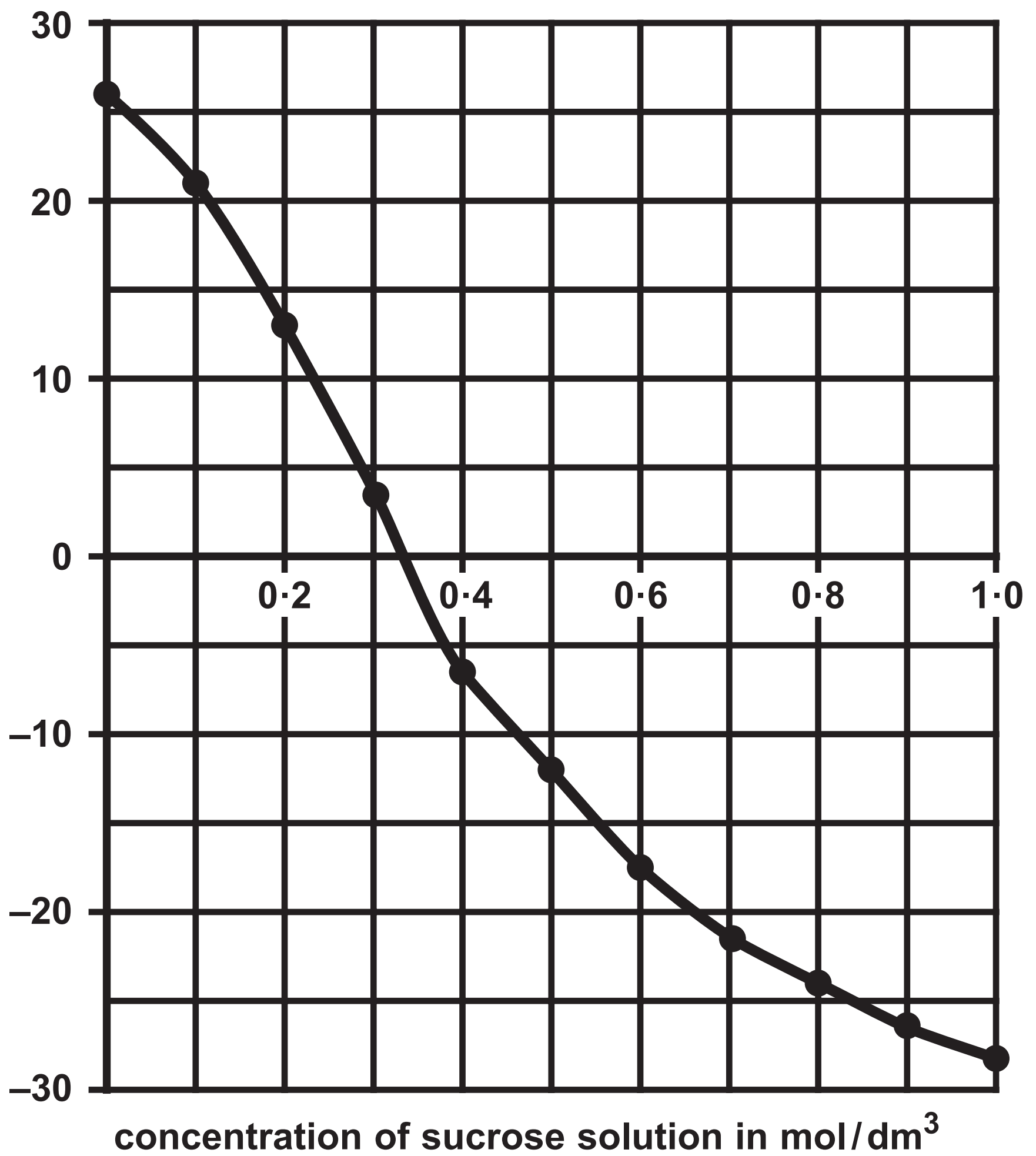
microscope slide



## Question 4(c)

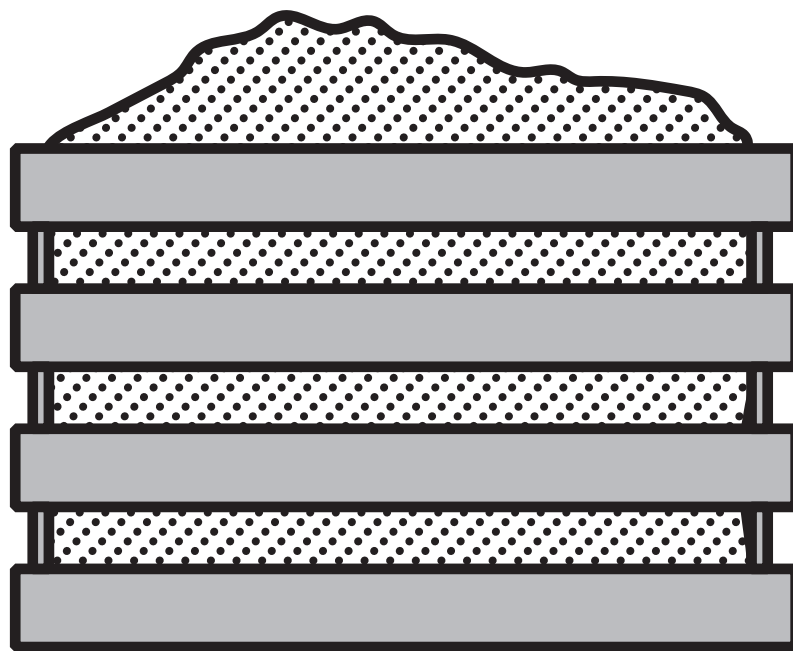
FIGURE 7

percentage  
change  
in mass



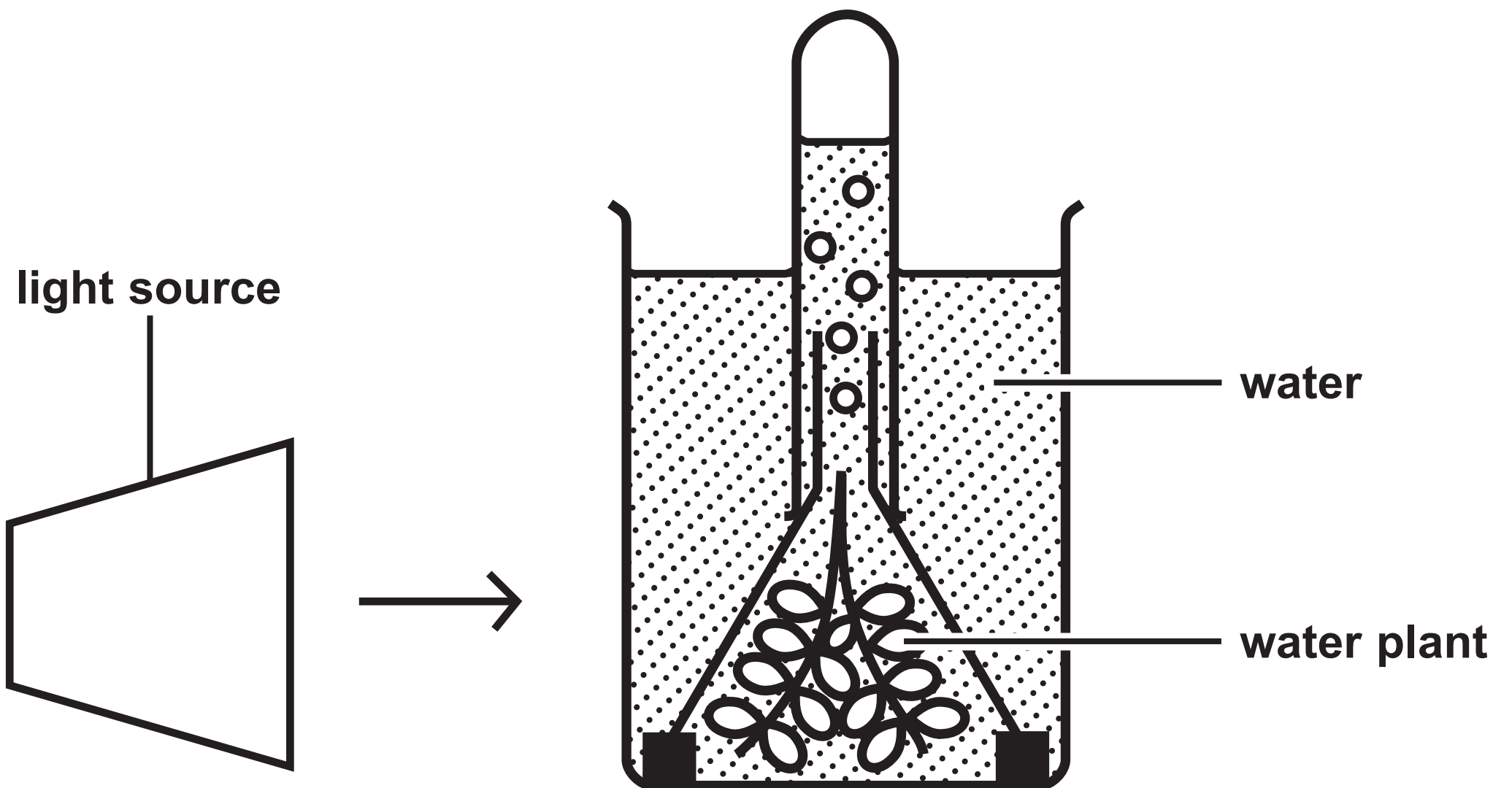
## Question 5(a)

FIGURE 8



## Question 6(a)

FIGURE 10



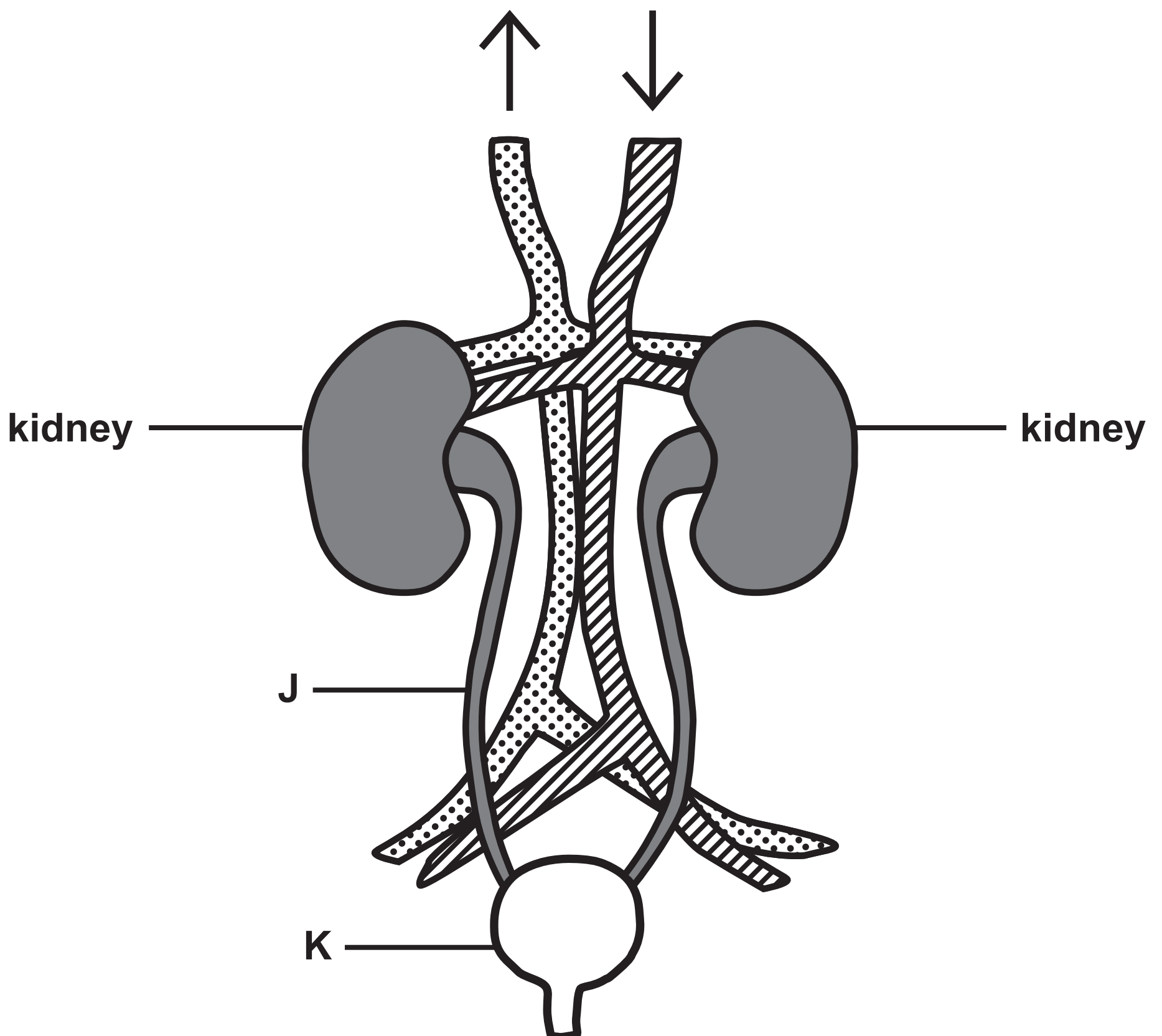
Question 6(a)(ii)

FIGURE 11

light intensity in arbitrary units	rate of photosynthesis in bubbles per minute
25	19
31	43
39	46
50	95
69	125
100	222

## Question 7(a)

FIGURE 12





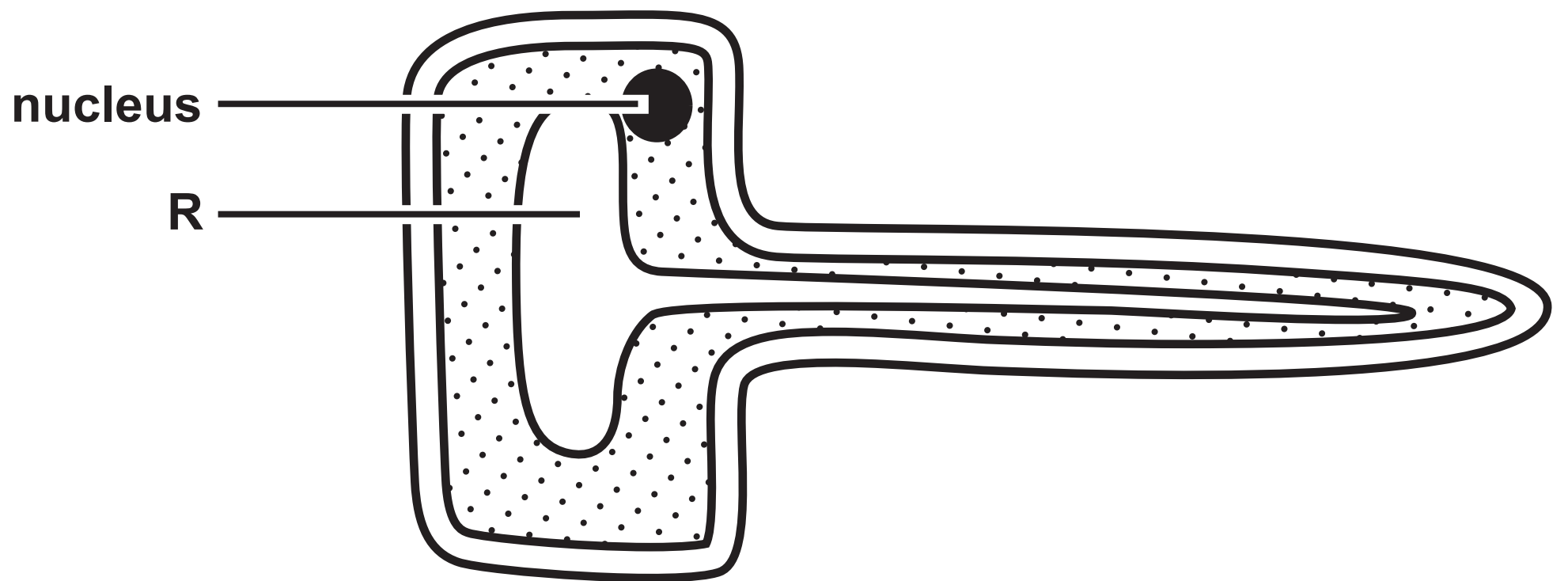
Question 7(b)(ii)

FIGURE 13

blood component	is the component filtered into the nephron?
blood cells	no
large proteins	no
glucose	yes
sodium ions	yes

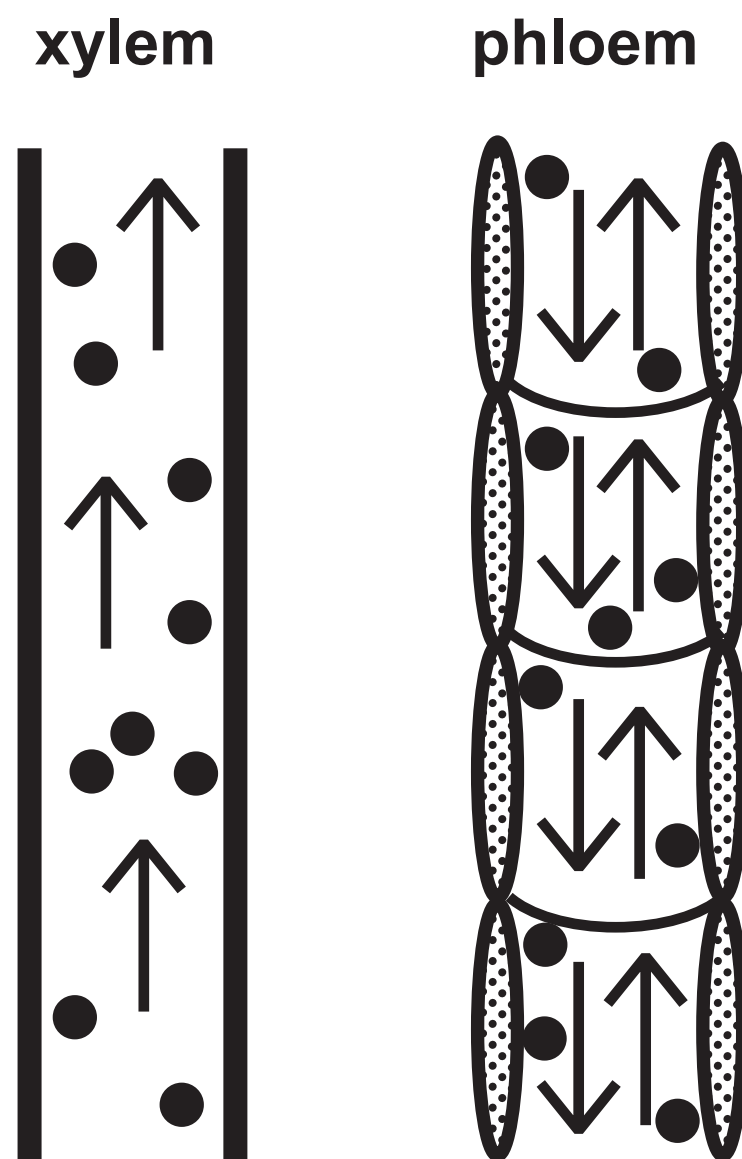
## Question 8(a)

FIGURE 14



## Question 8(b)

FIGURE 15



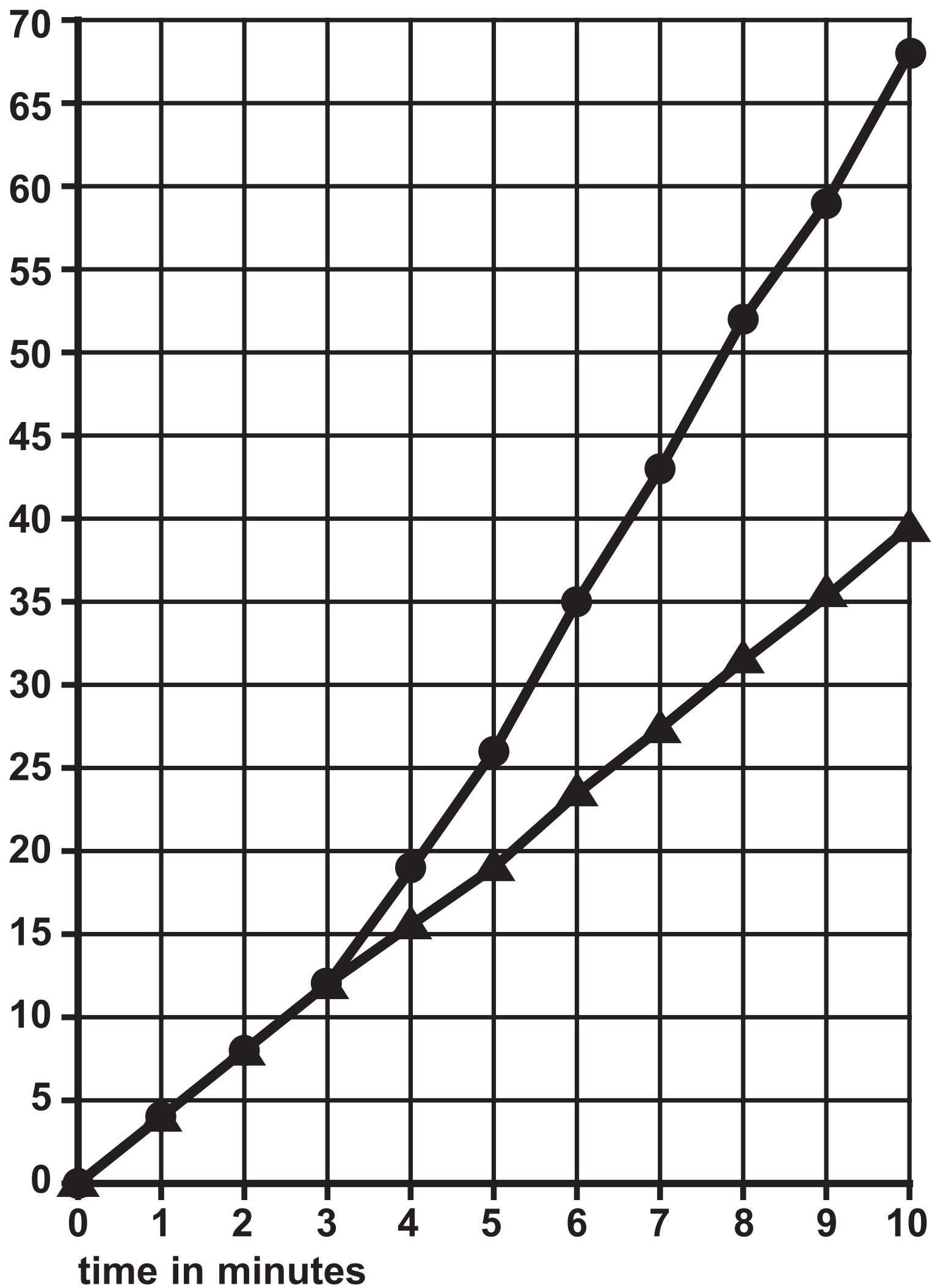
## Question 8(c)

FIGURE 16

—●— fan switched on after three minutes

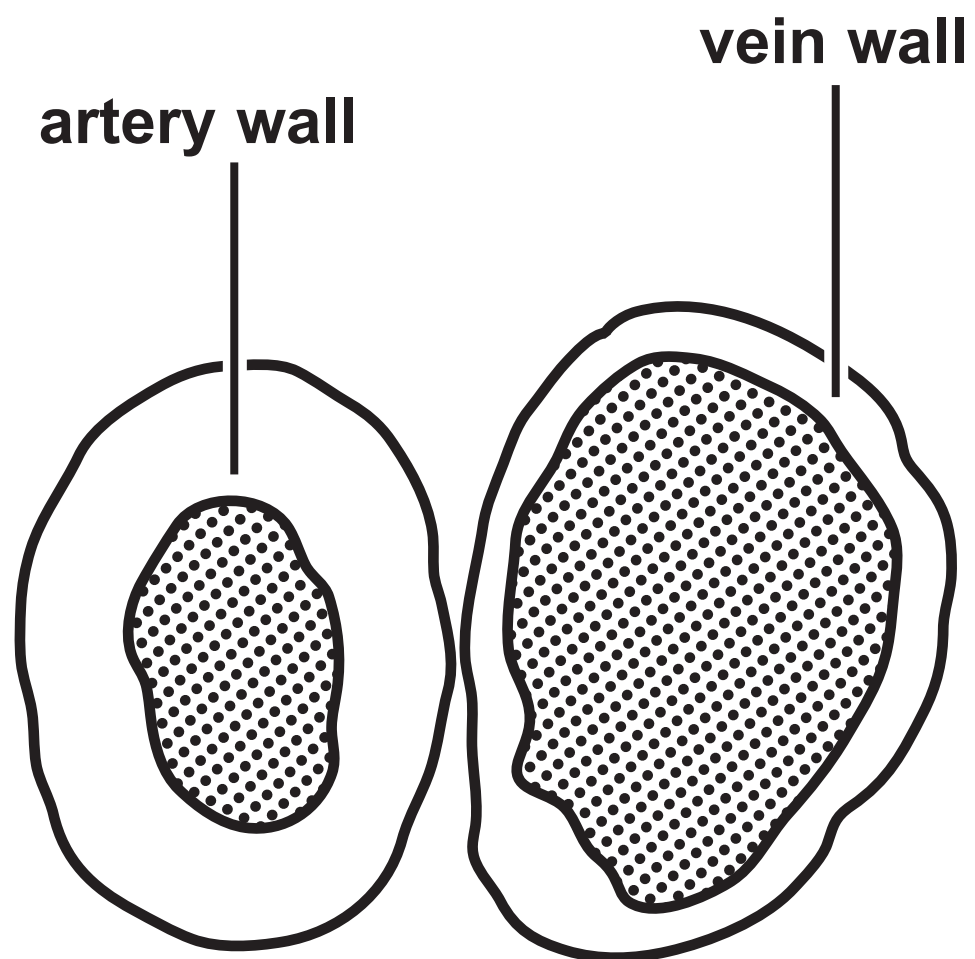
—▲— fan not switched on

volume of water taken  
up by the plant in  $\text{mm}^3$



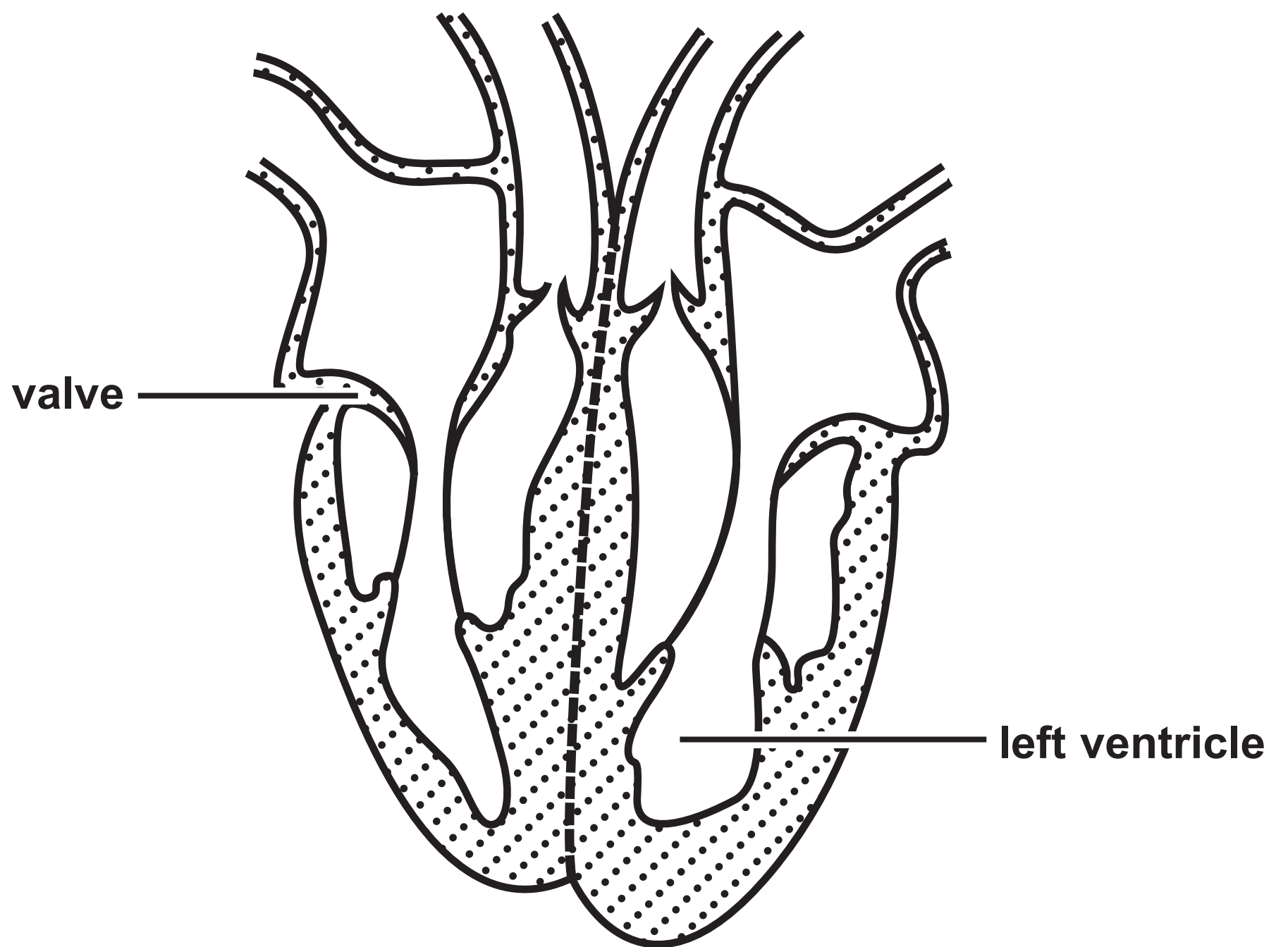
## Question 9(a)

FIGURE 17



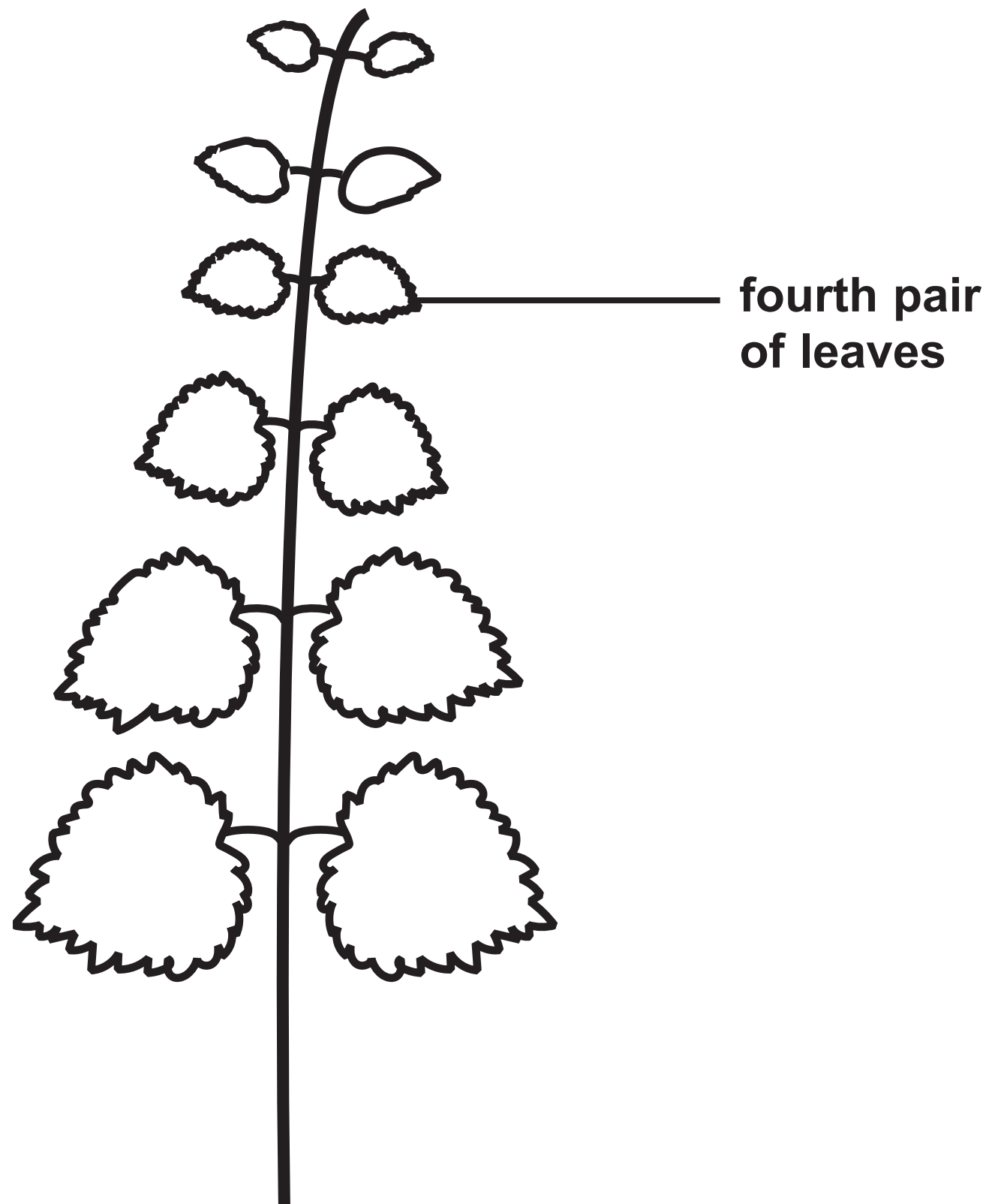
## Question 9(c)

FIGURE 18



## Question 10(a)

FIGURE 19



Question 10(b)

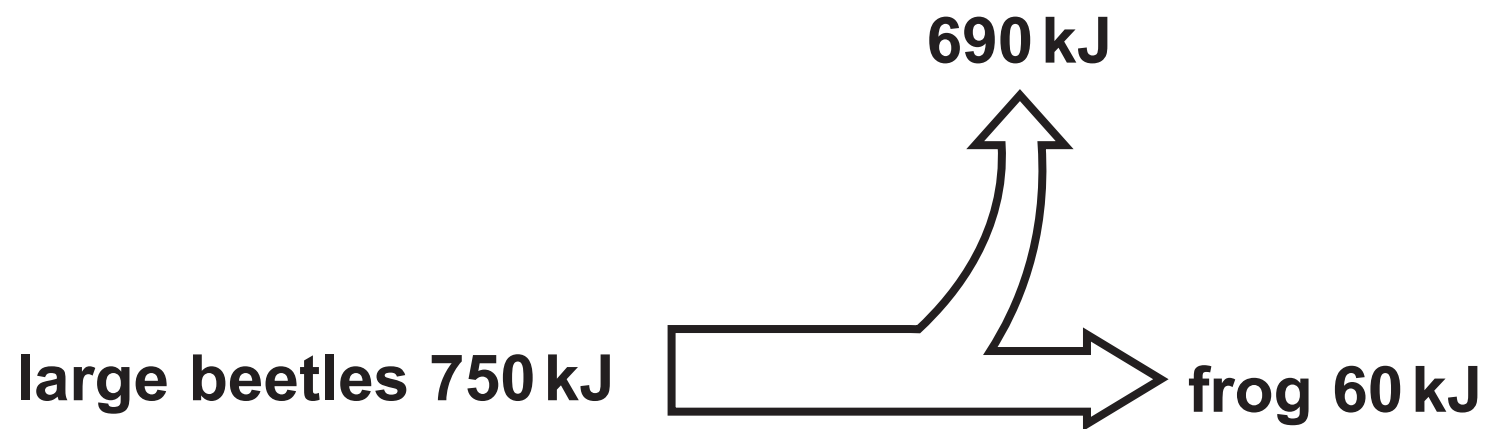
FIGURE 20

nettle plant	width of the leaf in millimetres (mm)	
	area A (in shade)	area B (in sunlight)
1	45	33
2	50	25
3	48	27
4	52	48
5	47	28
mean	48	28



## Question 10(c)(ii)

FIGURE 21



**Question 2(a)(ii)**

**(Source adapted from: © SciePro/Shutterstock)**

**Question 3(a)**

**(Source: © mariyaermolaeva/Shutterstock)**

**Question 4(a)**

**(Source adapted from: © Rattiya Thongdumhyu/Shutterstock)**

**Question 5(a)**

**(Source: © Evan Lorne/Shutterstock)**

**Question 6(a)**

**(Source: © ghrzuzudu/Shutterstock)**

**Question 9(a)**

**(Source: © The University of Kansas Medical Center)**

**Question 10(a)**

**(Source: © Alila Medical Media/Shutterstock)**